



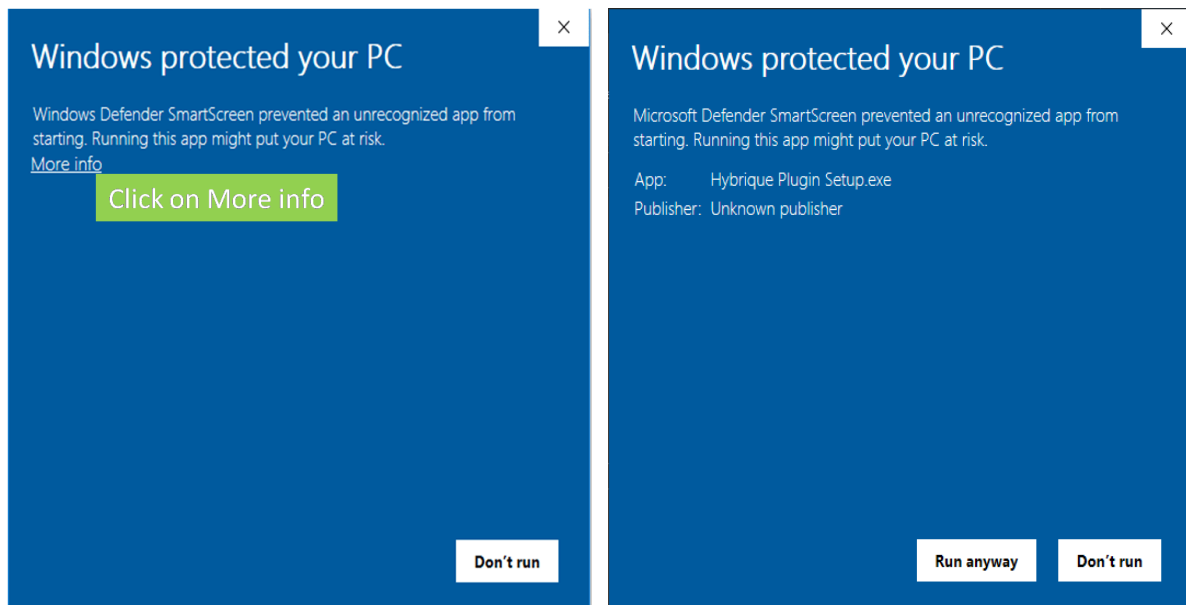
Hybrique Plugin Installation (Windows)

Watch the [Hybrique Plugin - Installation & Setup](#) video or follow this guide.

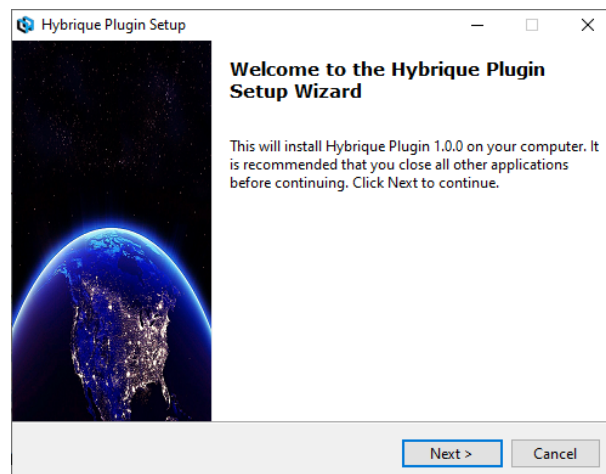
1. Double click on the “**Hybrique Plugin Setup.exe**”.

Name	Date modified	Type	Size
Hybrique Plugin Setup.exe	13-12-2021 19:57	Application	43,957 KB

2. If the windows defender stops the installation, then you need to click on “**More info**” and then click on “**Run anyway**” as shown below. If before/after this step your antivirus blocks the application then click on allow/allow-once on your antivirus window so that the application can be installed.

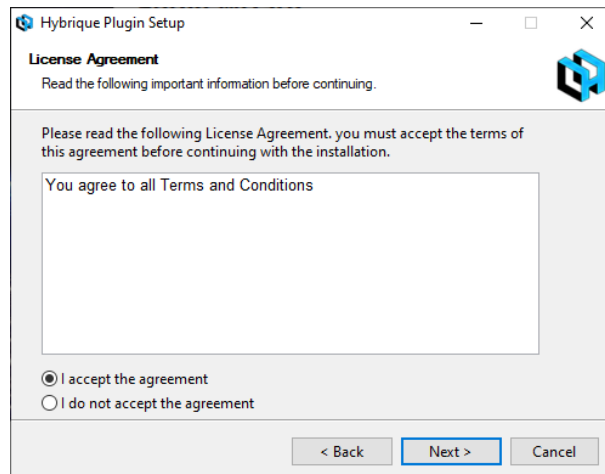


3. Click on “**Next**”.

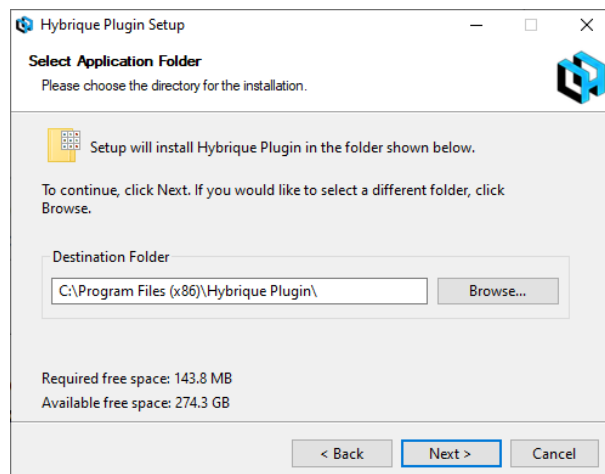




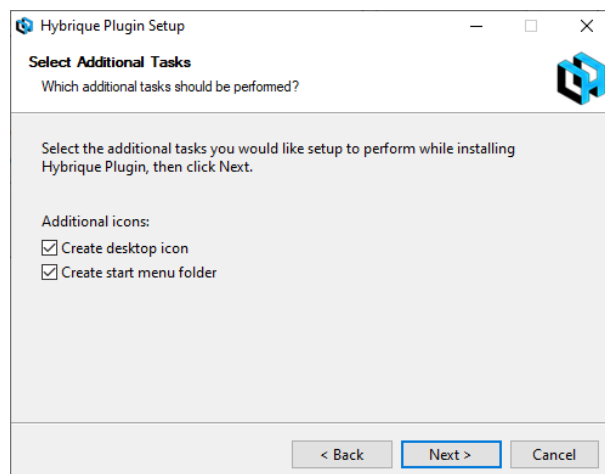
4. Choose “**I accept the agreement**” and then click on “**Next**”.



5. You can either browse and choose your preferred installation location or keep the default destination, then click on “**Next**”.

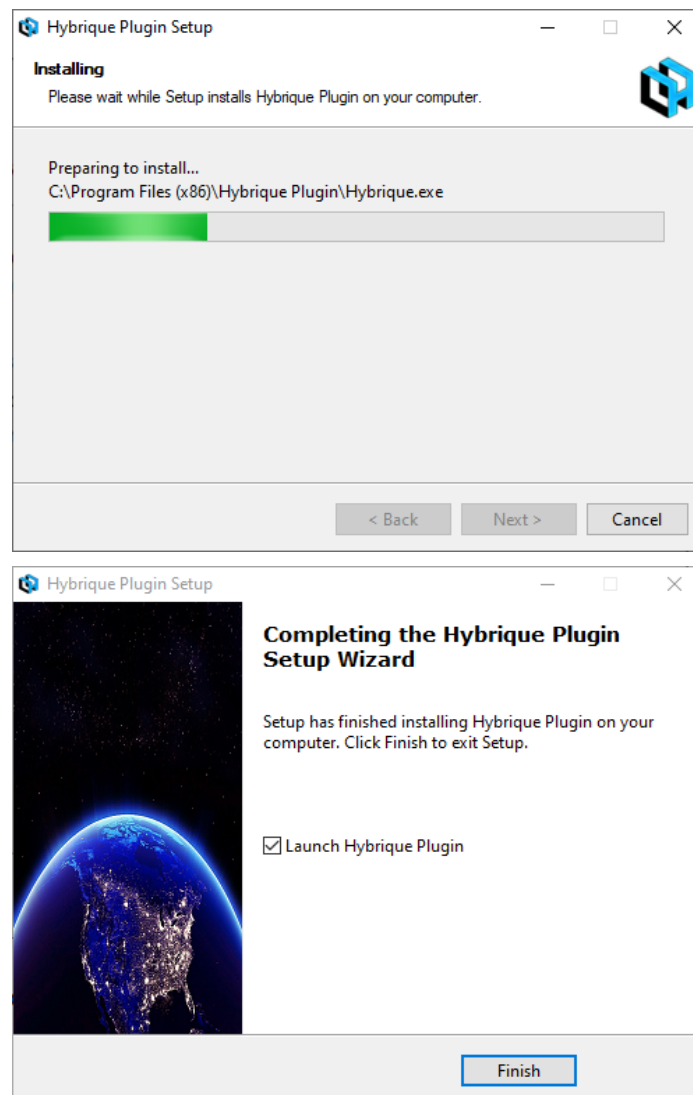


6. Choose the checkboxes as per your preference, then click “**Next**”.

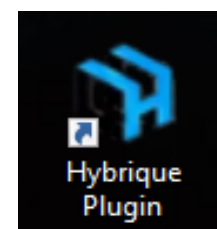
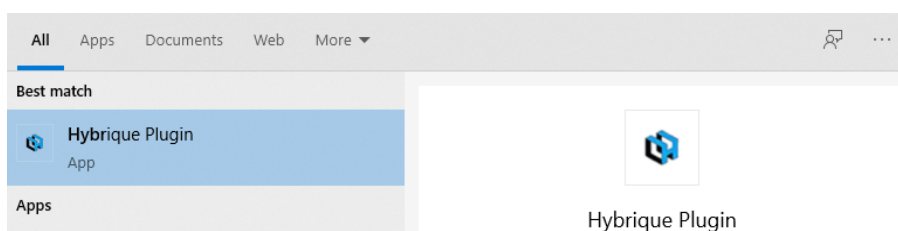




- Wait until it's installed, then click **"Finish"**. It is recommended to tick the option **"Launch Hybrique Plugin"** before closing this window.

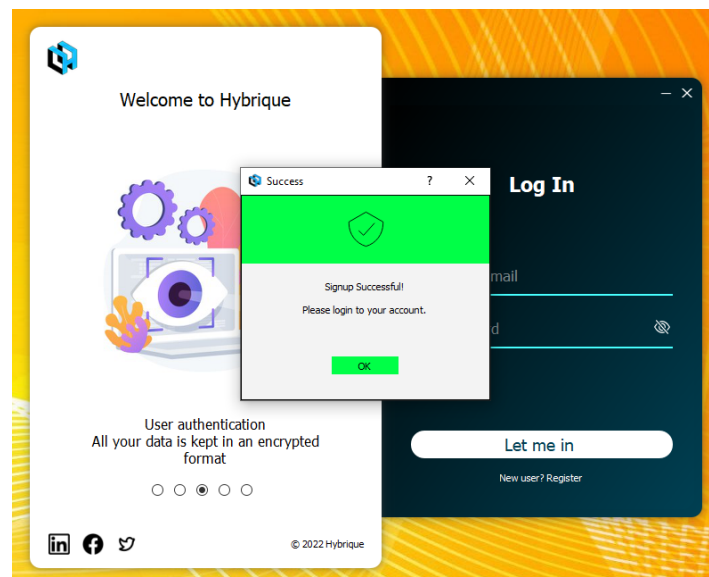
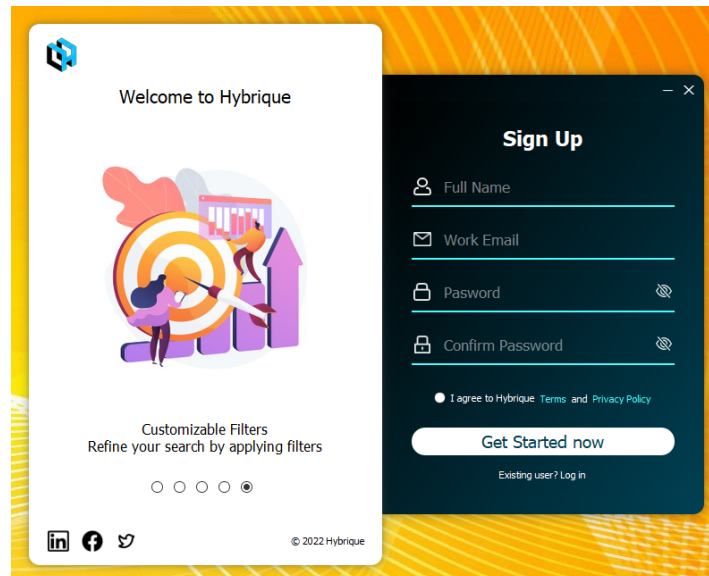


- If the **"Launch Hybrique Plugin"** was selected in its previous step (**Step 7**) then it will directly launch the application, so you can skip this step. If not selected or closed manually then the application can be launched from the **Start Menu** or **Desktop Shortcut** if checked in (**Step 6**).

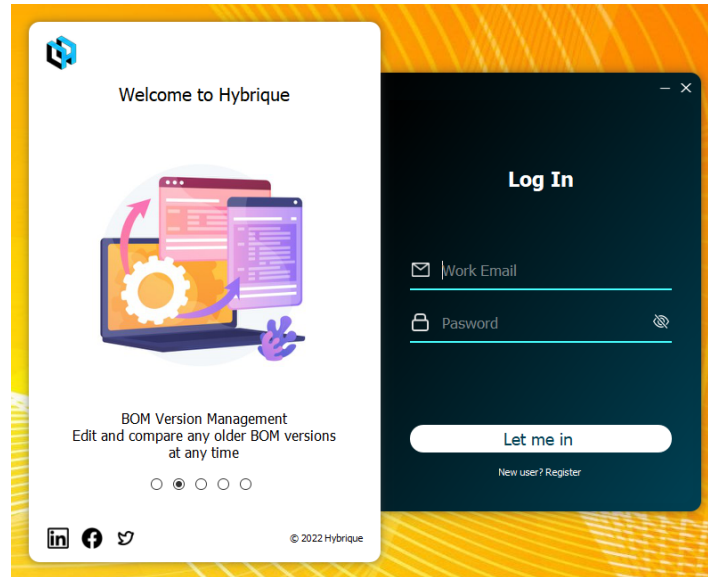




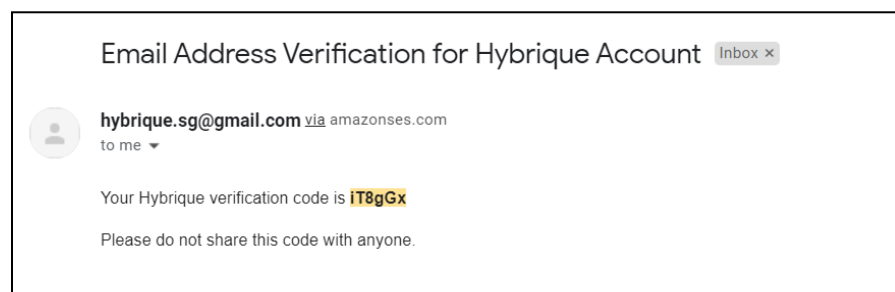
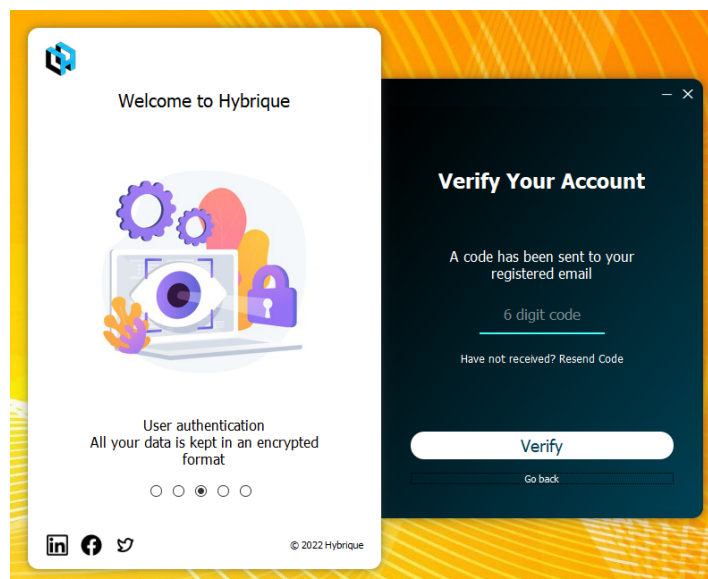
9. If you already have an account, then log in to it else click on **"New user register"**. Complete the form, accept the terms & privacy policy, and click on **"Get started now"**, this will create your new account.



10. Now give your email id and password, and then click on **"Let me in"**, for logging in to your account.

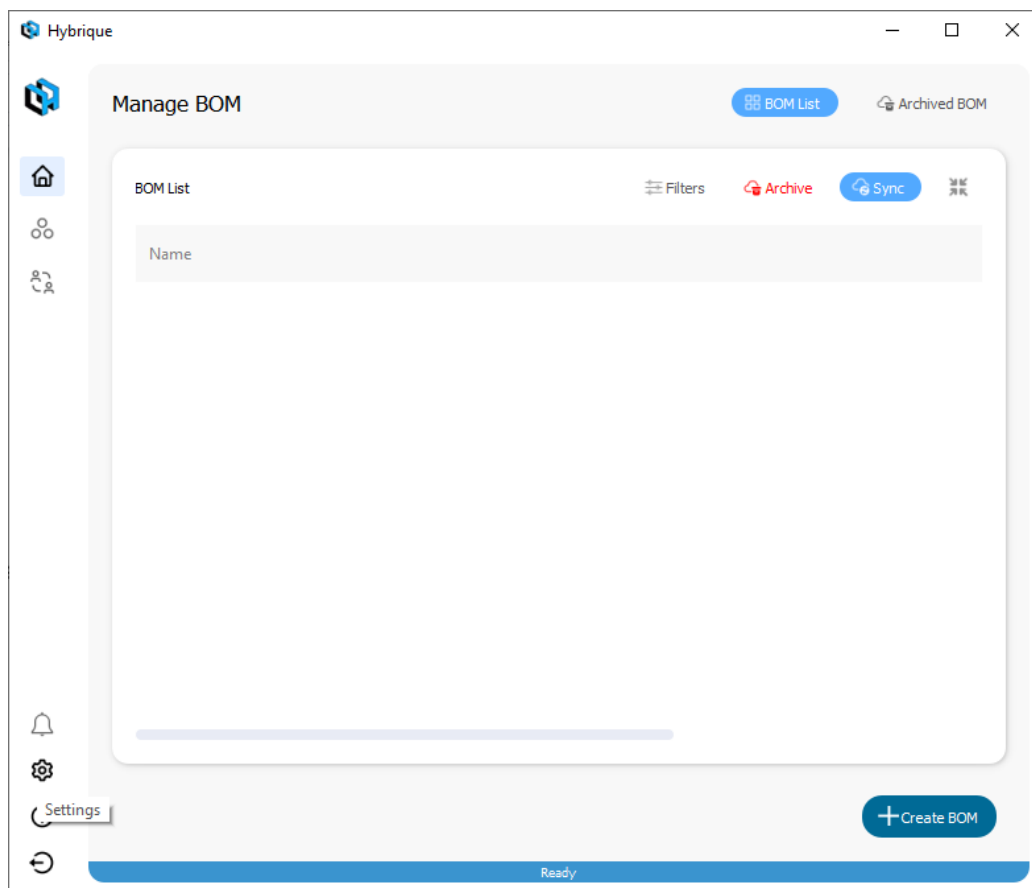
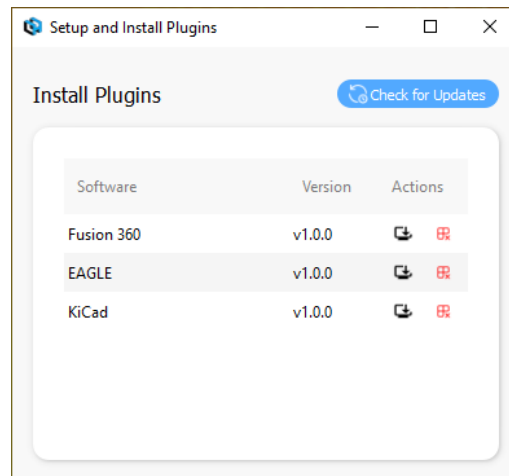


11. If you are logging in for the first time, then you need to verify your account. A verification code has been sent to your registered email. Copy that code from your email and paste it here (Also check your Primary, Social, Promotions & Spam section in your email). If you have not received the code you can click on the “resend code”. Finally, click on “Verify”.





12. In this window, all the currently supported CAD plugins are listed. Make sure you have the CAD software pre-installed for which you want to install our plugin. If you accidentally closed this dialog, then it can be found in the application's **settings**.

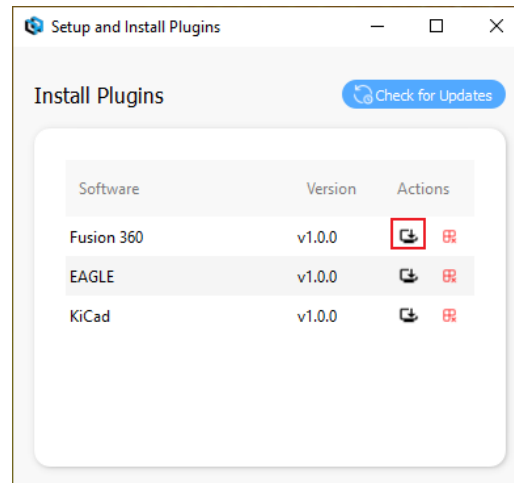




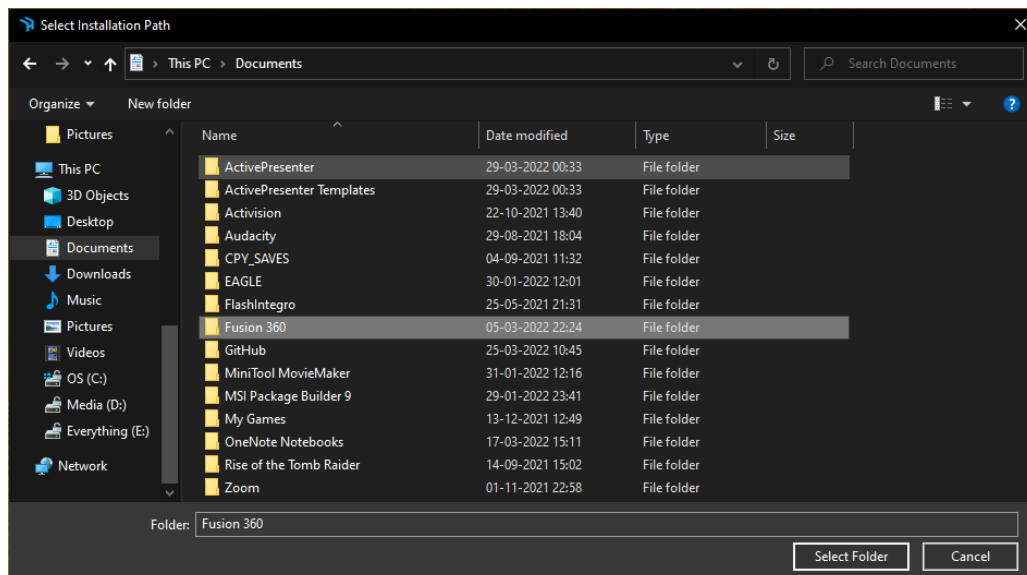
13. Installing in “**Fusion 360**”:

13.1. Before linking the Hybrique plugin with Fusion 360, please make sure you have Autodesk Fusion 360 installed in your system, if not you can download it from this link: [Fusion 360 | 3D CAD, CAM, CAE & PCB Cloud-Based Software | Autodesk](https://www.autodesk.com/products/fusion-360/overview)

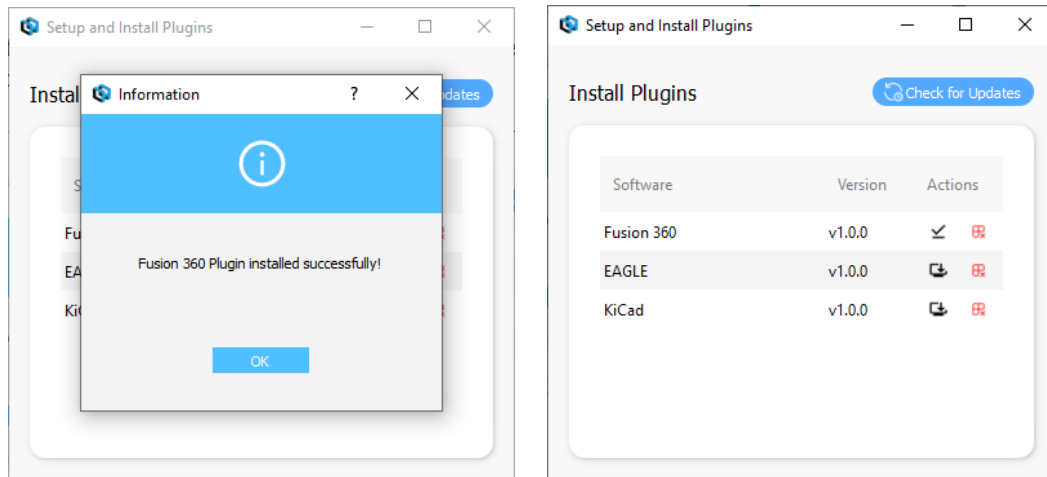
13.2. Click on the download action button present next to Fusion 360 (marked with a red box in the image below), and it will prompt a folder selection window.



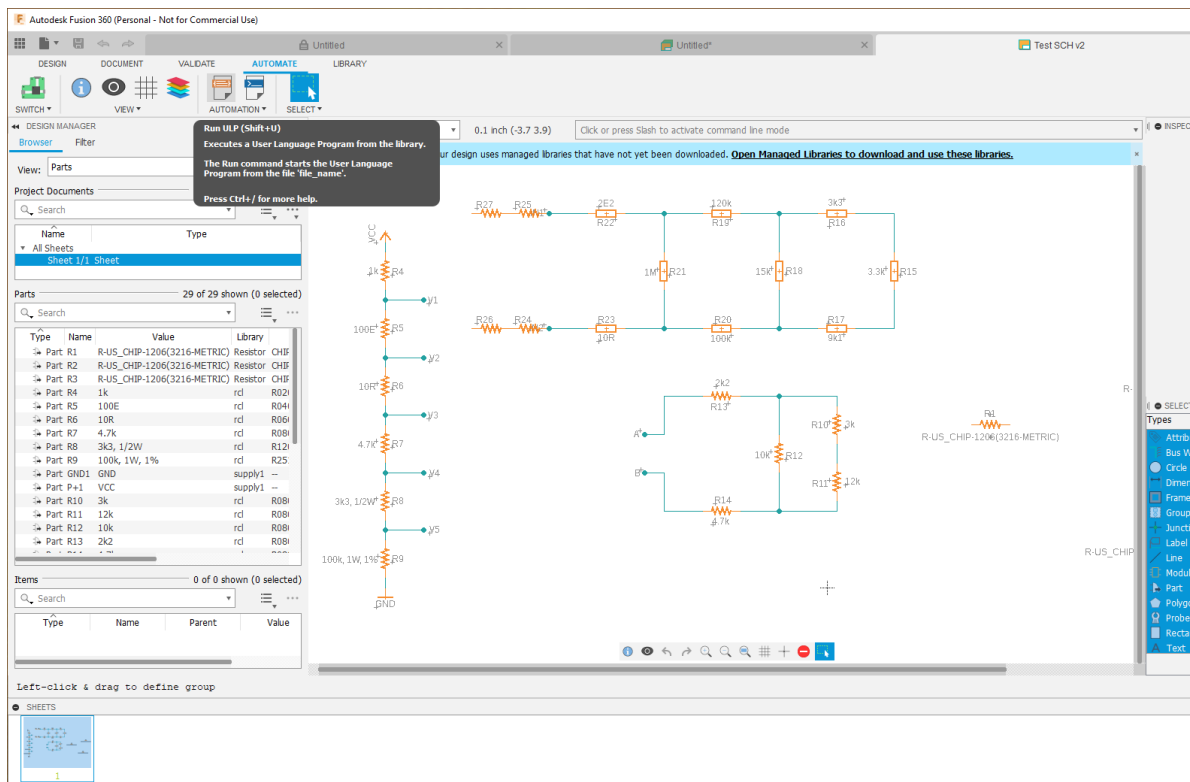
13.3. There must be a folder named **Fusion 360** inside your Documents folder. Choose the “**Fusion 360**” folder present inside your “**Documents**” and click on “**Select Folder**”.



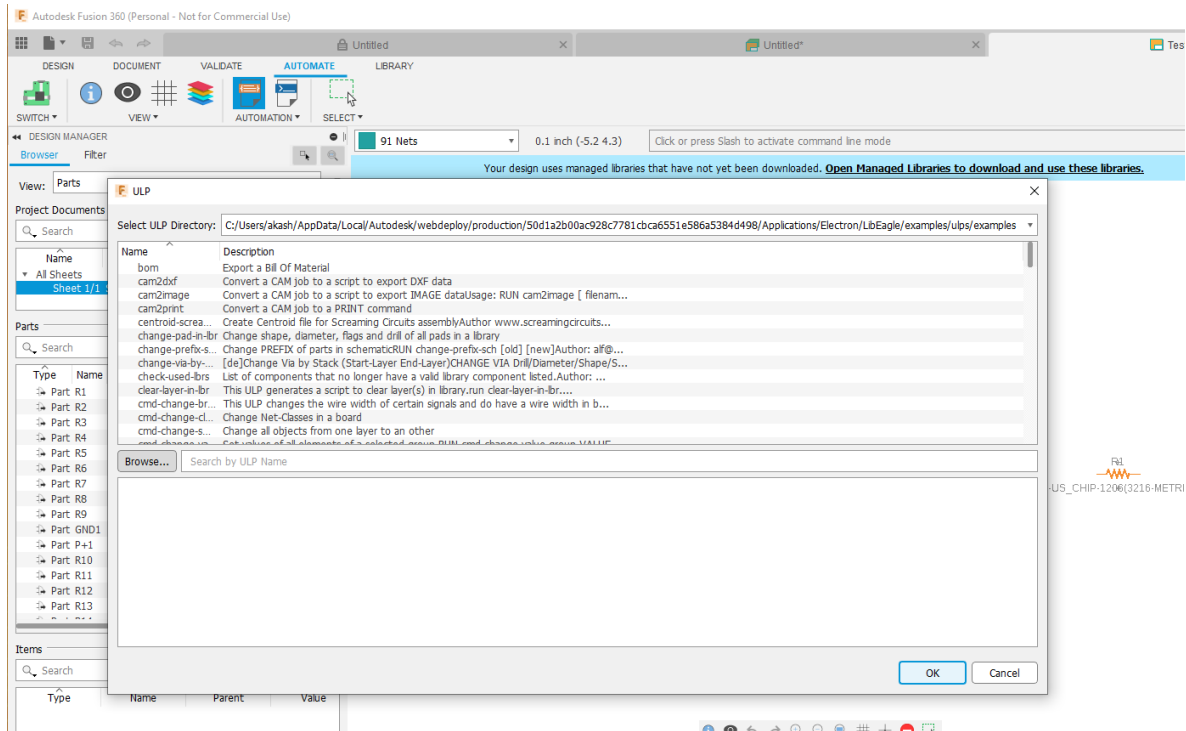
13.4. On Successful installation, a popup as shown below will come. After this, you can close the application.



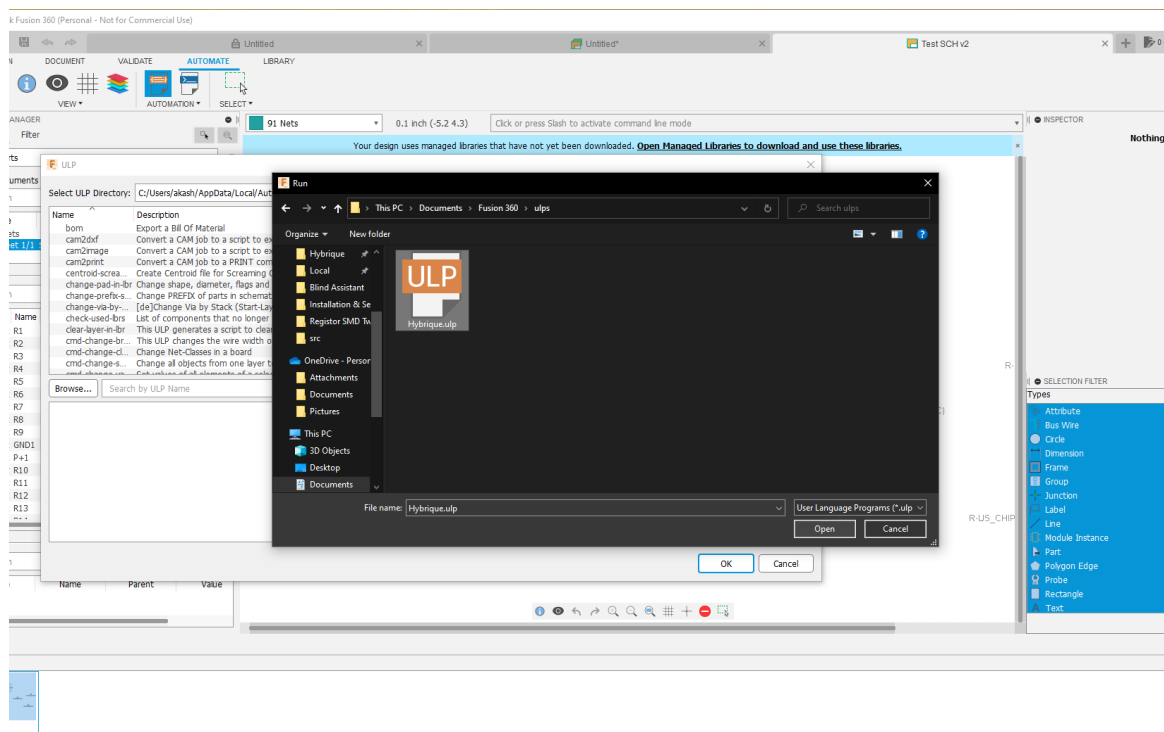
13.5. Now, open Fusion 360. Go to the Electronics Design Section. Create a new or open an existing schematic file. To launch the application, go to Automate and click on Run ULP.



13.6. Then, click on Browse.



13.7. Next go to Documents -> Fusion360 -> ulps and select **Hybrique.ulp**. It will launch the application.

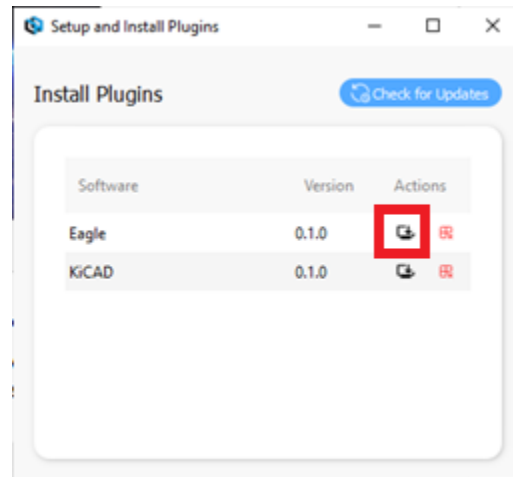




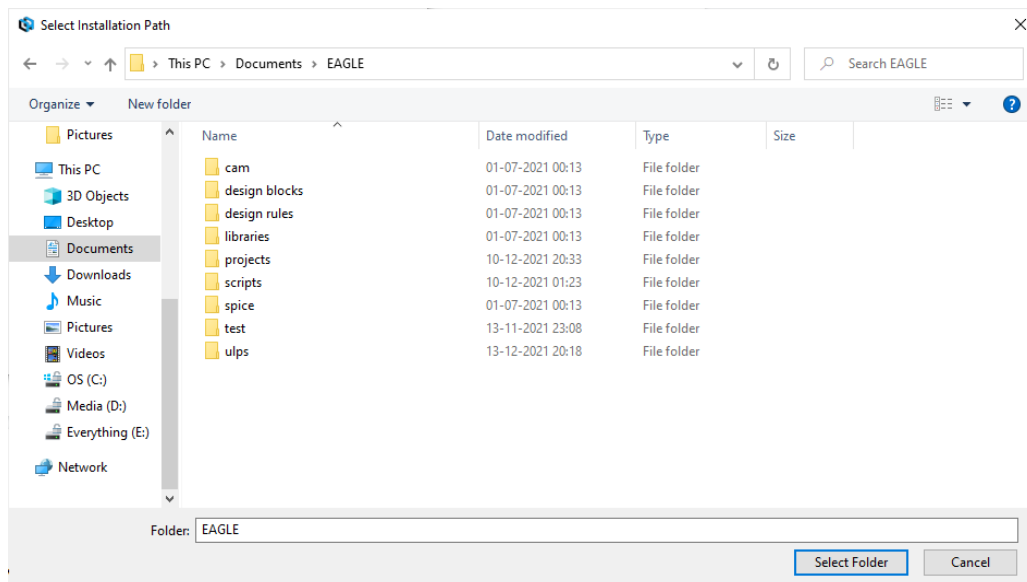
14. Installing in “**Eagle**”:

14.1. Before linking the Hybrique plugin with Eagle, please make sure you have Autodesk Eagle installed in your system, if not you can download it from this link: [Download EAGLE | Free Download | Autodesk](#)

14.2. Click on the download action button present next to Eagle (marked with a red box in the image below), and it will prompt a folder selection window.

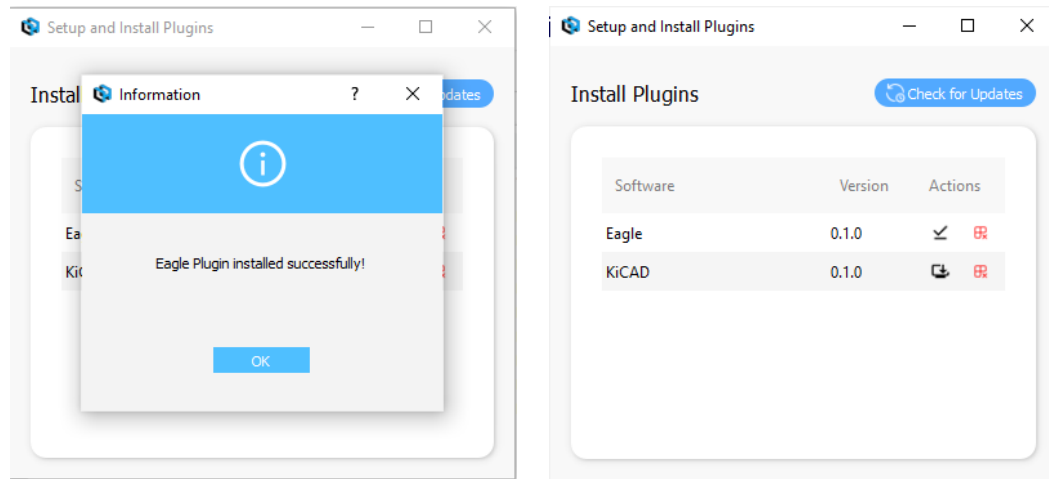


14.3. There must be a folder named **Eagle** inside your Documents folder (this is the default location for the Eagle working directory). Choose the “**Eagle**” folder present inside your “**Documents**” and click on “**Select Folder**”.

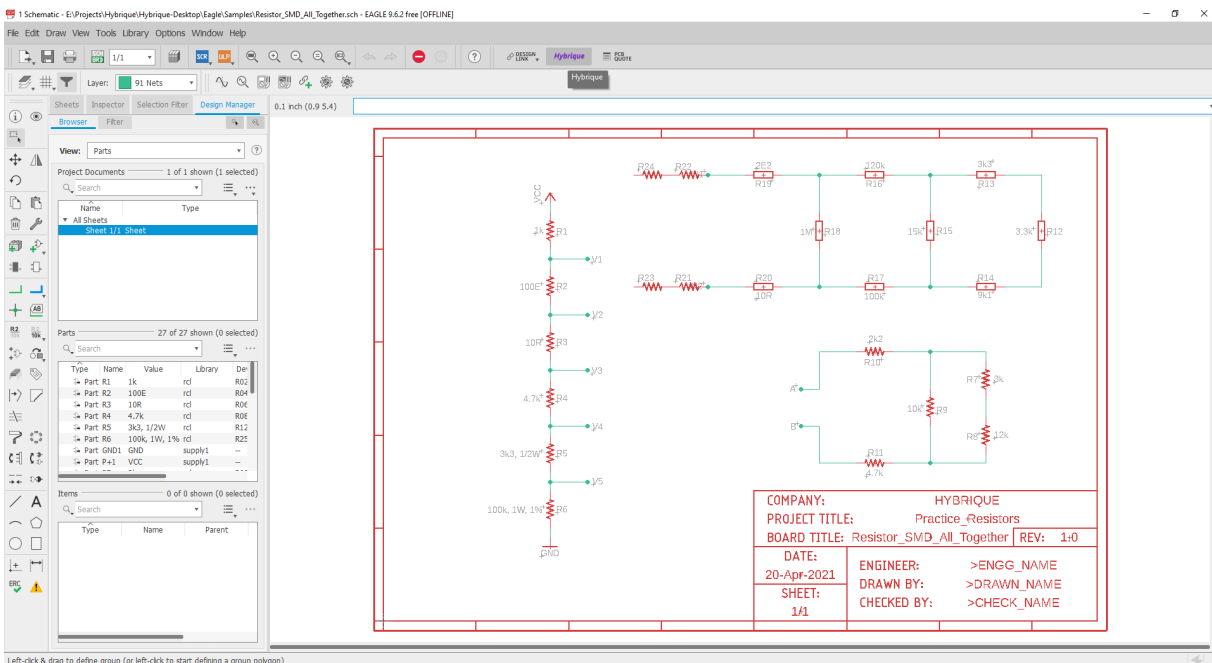




- 14.4. On Successful installation, a popup as shown below will come. After this, you can close the application.



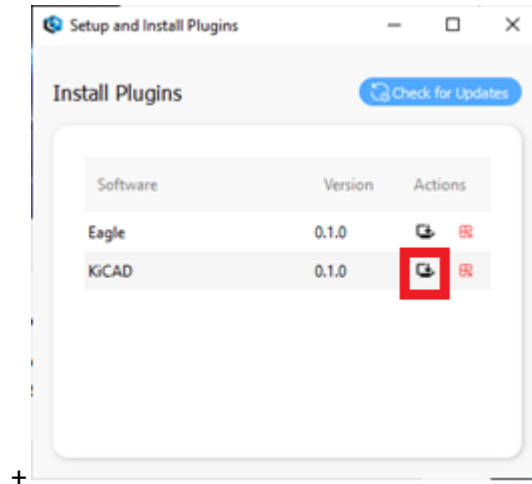
- 14.5. Now, you can see a Hybrique plugin in your Eagle user interface. by clicking on the “Hybrique” button at the top menu bar you can launch the program.



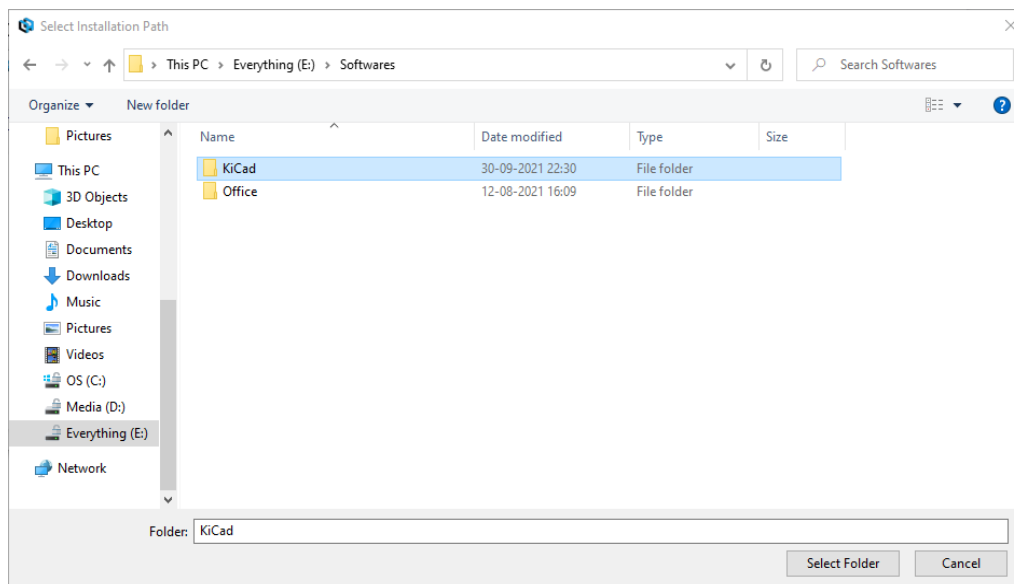


15. Installing in “**KiCad**”:

- 15.1. Before installing in KiCad make sure you have KiCad installed in your system, if not you can download it from this link: [Download | KiCad EDA](#)
- 15.2. Click on the download action button present in the KiCad row.



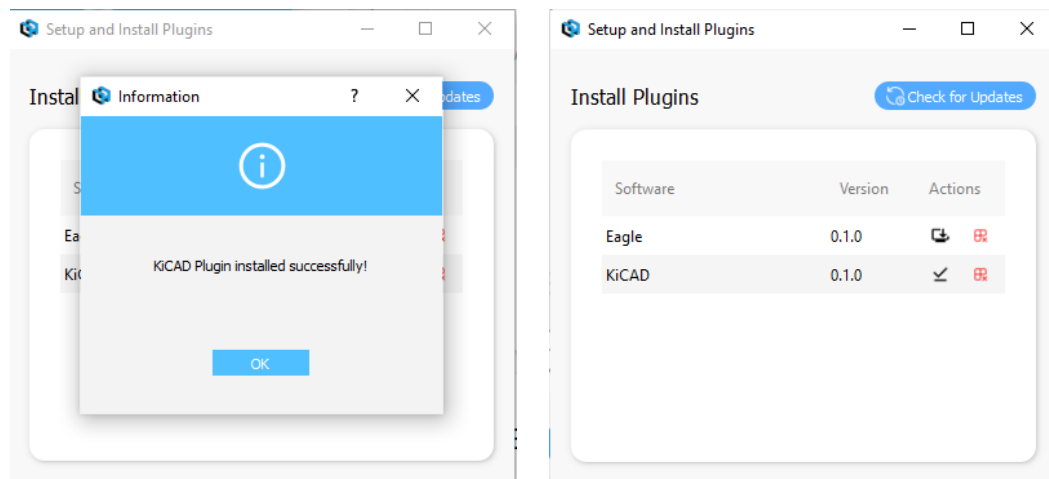
- 15.3. It will prompt a folder selection window. Choose the “**KiCad**” folder present at the location where you had installed KiCad and click on “**Select Folder**”. If you had not specified a different location for KiCad installation, then the KiCad installation location is **C: > Program Files > KiCad**. Search this folder and select it.



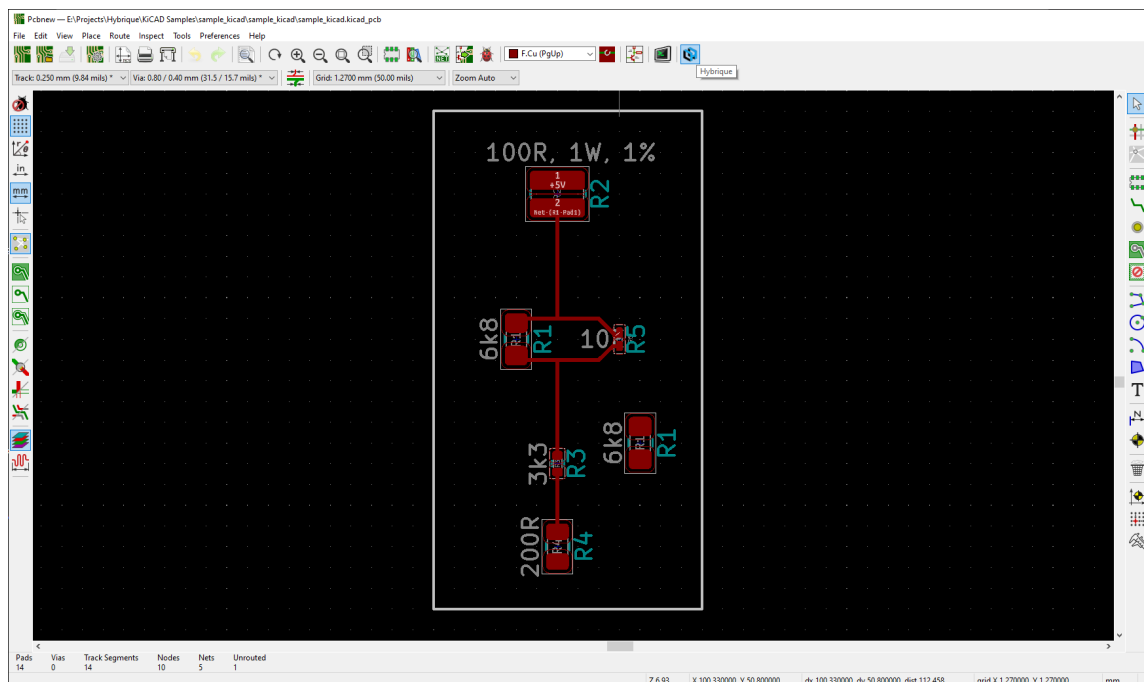
(For example, here KiCad installation location is E: > Softwares > KiCad. So, in this case, you need to go to E: > Softwares and then pick the KiCad folder. By default, the location for installation is “**C:\Program Files\KiCad**”. So move to C: > Program Files and then select the KiCad folder.)



- 15.4. On Successful installation, a popup as shown below will come. After this, you can close the application.



- 15.5. Now, you can launch the application from KiCad, by clicking on the “**Hybrique Logo**” button at the top menu bar.



What's Next?

Follow the [Hybrique Plugin - How to Use](#) video to know more about the plugin.